



ENERTEC
WINDOW SYSTEMS INC.

CONTEMPORARY VINYL WINDOWS





Energy efficient vinyl windows extruded from 100% virgin uPVC for maximum durability and structural strength.

Our casement, awning, picture, slider and hung extrusions feature a slimmer, modern profile with a sleek look, while achieving superior energy efficiency.

YOUR FIRST STEP TO MODERNIZING YOUR HOME

Enertec Window Systems Inc. is a vinyl window manufacturer based in Vaughan, ON with focus on building quality, energy efficient, sleek looking windows for your home.

Our energy efficient vinyl windows are extruded from 100% virgin, lead-free uPVC for maximum durability and structural strength.

We believe that an investment in energy-efficient windows not only brings the added value of comfort and security but also green living in harmony with the environment.

FEATURES

- Contemporary Profiles
- Heavy Duty Hardware
- Triple Seal Weather Stripping
- Standard Multipoint Locks
- Standard Low-E Glass
- Standard Argon Gas
- Energy Star Certified
- Conforms to AAMA/WDMA/CSA 101/I.S.2/A440-11 and A440S1-09



CONTEMPORARY CASEMENT WINDOWS

Casement windows open outwards up to 90 degrees. They are hinged on the left or right and one of the most popular and energy efficient operable window choices.

Casement windows are tall and narrow, open outward and use a crank handle for smooth operation. They are easy to clean, provide exceptional ventilation & create a clear outside view.

Can be combined with fixed casement & slim fixed windows to create a combination unit.

Maximum tested dimensions:
36" wide & 72" tall

PERFORMANCE RATINGS

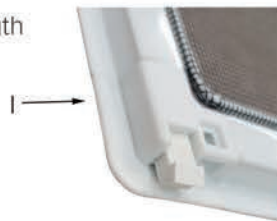
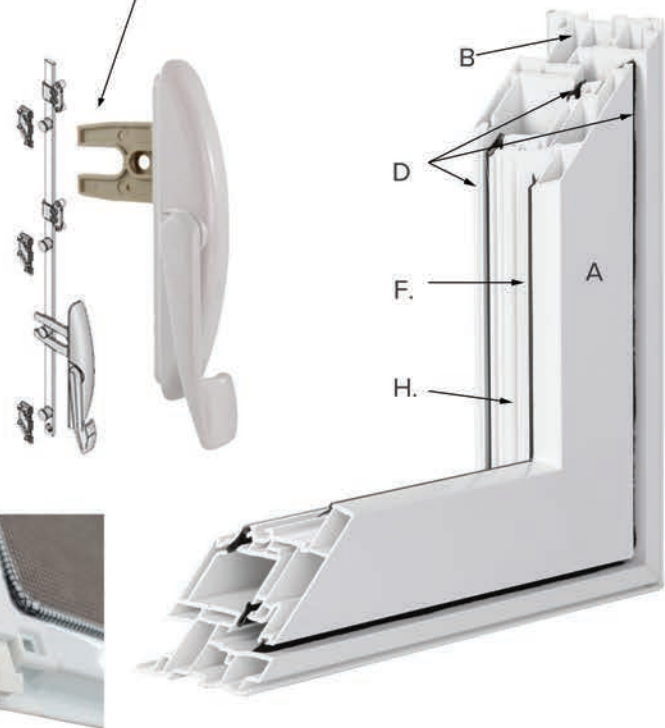
- Primary designator: Class LC - PG75 - 32x59 in - Type C
- Positive design pressure (DP): 3600 Pa (75.19 psf)
- Negative design pressure (DP): -3600 Pa (-75.19psf)
- Water penetration resistance test pressure: 720 Pa (15.04psf)
- Canadian air infiltration / exfiltration level: A3
- Conforms to AAMA/WDMA/CSA 101/I.S.2/A440-11 and A440S1-09

CASEMENT FRAME & HARDWARE

- A. Contemporary & Slim Profile
- B. Multi-Chamber Fusion Welded Frame & Sash for Strength and Energy Performance
- C. Heavy Duty Hardware with Fold Away Crank
- D. Triple Seal Weather Stripping
- E. Standard Multipoint Locks with Slim Lever
- F. Hidden Glass Stoppers for Unobstructed View
- G. Low-E Glass & Argon Gas
- H. Double (7/8" OT) and Triple (1-1/4" OT) Glass for Optimal Energy & Soundproofing Performance

- I. Push Down Screens
- Energy Star Certified

• Conforms to AAMA/WDMA/CSA 101/I.S.2/A440-11 and A440S1-09



CONTEMPORARY AWNING WINDOWS

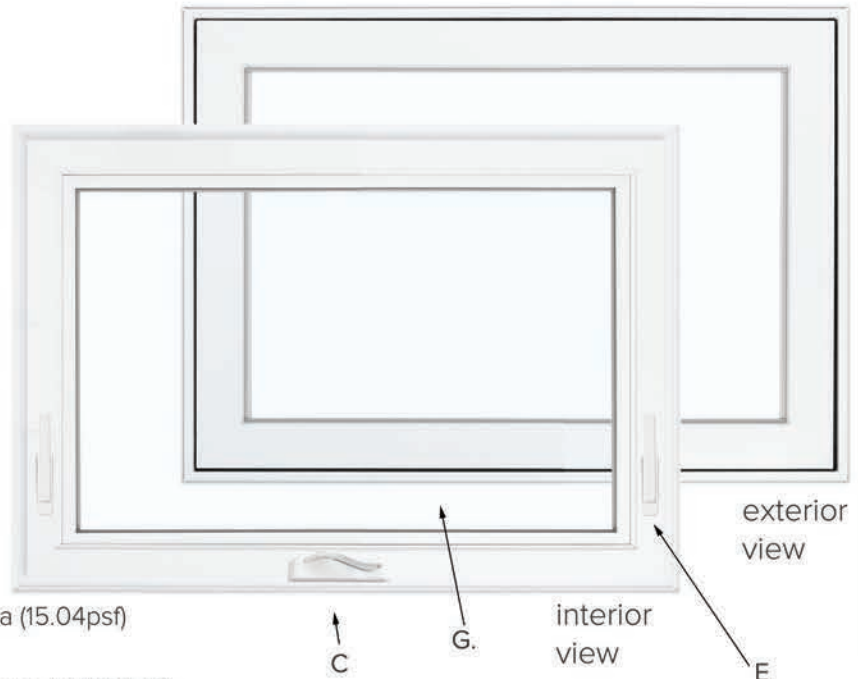
Awning windows are hinged at the top and open out from the bottom. Easy crank handle operation provides excellent ventilation while protecting the interior from precipitation.

Can be combined with fixed casement and picture windows to create a combination unit.

Maximum tested dimensions:
60" wide & 60" tall

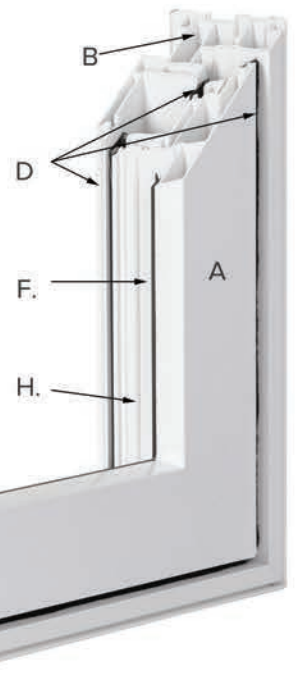
PERFORMANCE RATINGS

Primary designator: Class LC - PG50 - 47x32 in
 Positive design pressure (DP): 2400 Pa (50 psf)
 Negative design pressure (DP): -2400 Pa (-50 psf)
 Water penetration resistance test pressure: 720 Pa (15.04psf)
 Canadian air infiltration / exfiltration level: A3
 Conforms to AAMA/WDMA/CSA 101/I.S.2/A440-11 and A440S1-09



AWNING WINDOW FEATURES

- A. Contemporary & Slim Profile
 - B. Multi-Chamber Fusion Welded Frame & Sash for Strength and Energy Performance
 - C. Heavy Duty Hardware with Fold Away Crank
 - D. Triple Seal Weather Stripping
 - E. Standard Multipoint Locks with Slim Levers
 - F. Hidden Glass Stoppers for Unobstructed View
 - G. Low-E Glass & Argon Gas
 - H. Double (7/8" OT) and Triple (1-1/4" OT) Glass for Optimal Energy & Soundproofing Performance
 - I. Push Down Screens
- Energy Star Certified
 - Conforms to AAMA/WDMA/CSA 101/I.S.2/A440-11 and A440S1-09



FIXED WINDOWS

There are two types of fixed windows: casement fixed and picture fixed.

Fixed casement windows emulate the look and feel of casement and awning windows and are used when creating combination units for wide openings or standalone.

Fixed picture windows are used in combination with slider and hung windows, standalone and when creating architectural shapes such as arches, trapezoids, triangles, octagons, circles, and other shapes.

Fixed windows cannot be opened and feature the best energy efficiency among window types.

PERFORMANCE RATINGS

FIXED CASEMENT

Primary designator: Class CW-PH75 - 59 X 59 in - FW
 Positive design pressure (DP): 3600 Pa (75.19 psf)
 Negative design pressure (DP): -3600 Pa (-75.19psf)
 Water penetration resistance test pressure: 730 Pa (15.25psf)
 Canadian air infiltration / exfiltration level: FIXED
 Conforms to AAMA/WDMA/CSA 101/I.S.2/A440-11 and A440S1-09

FIXED PICTURE

Primary designator: Class CW-pg70 - 59 X 59 in - FW
 Negative design pressure (DP): -3360 Pa (-70psf)
 Canadian air infiltration / exfiltration level: FIXED

Positive design pressure (DP): 3360 Pa (70 psf)
 Water penetration resistance test pressure: 730 Pa (15.25psf)
 Conforms to AAMA/WDMA/CSA 101/I.S.2/A440-11 and A440S1-09



fixed casement



fixed picture



CONTEMPORARY SLIDER & HUNG

Slider windows (sash slides side to side) and hung windows (sash slides up and down) are quite popular for those seeking minimum obstruction protruding from the outside. They are easy to operate, easy to clean and maintain, and offer good energy efficiency.

Both slider and hung windows can be configured to have both sashes as operable, or where one side is fixed and the other one is operable.

SINGLE SLIDER PERFORMANCE RATINGS

LC-PG35- 1826 x 1395mm(72 x 55in)-HS
DP: +/-1680Pa(+/-35psf)
Water Test Pressure: 470Pa
Canadian Air Infiltration/Exfiltration: A3
Conforms to AAMA/WDMA/CSA 101/I.S.2/A440-11 and A440S1-09

SINGLE HUNG PERFORMANCE RATINGS

R-PG40- 1000 x 1600mm(39 x 63in)-H
DP: +/-4080Pa(+/-85psf)
Water Test Pressure: 290Pa
Canadian Air Infiltration/Exfiltration: A3
Conforms to AAMA/WDMA/CSA 101/I.S.2/A440-11 and A440S1-09

SLIDER AND HUNG WINDOW FEATURES

- A. Contemporary & Slim Profile
- B. Multi-Chamber Fusion Welded Frame & Sash for Strength and Energy Performance
- C. Handle Integrated Within The Sash
- D. Triple Seal Weather Stripping
- E. Hidden Glass Stoppers for Unobstructed View
- F. Low-E Glass & Argon Gas
- G. 7/8" Glass Unit OT for Optimal Energy and Soundproofing Performance
- H. Energy Star Certified



SLIDER & HUNG SLIM LOCK



end vent slider window

EXTERIOR OPTIONS - BRICKMOLD

4 sizes of brickmold are offered. All brickmold sizes add 1-1/4" depth to the frame of the window. Brickmolds can be ordered with our without nailing fin.

0 Brickmold

FLAT BRICKMOLD EXTENDING THE FRAME BY 1-1/4" OUT. NAILING FIN IS NOT AVAILABLE

3/4" Brickmold



1-1/4" Brickmold



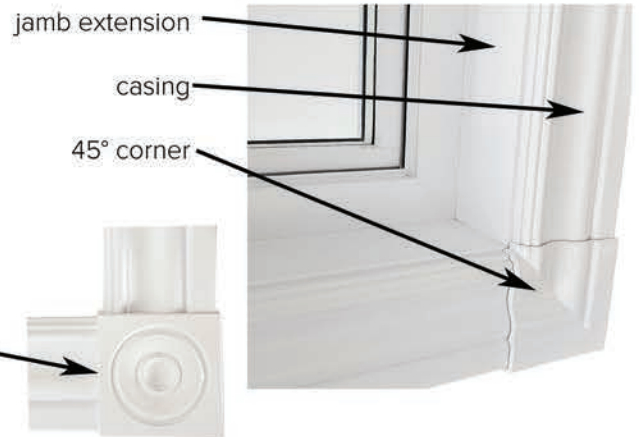
1-3/4" Brickmold



INTERIOR EXTENTIONS & CASING

VINYL PACKAGE

Vinyl package is a convenient option complementing the vinyl frame of a window with a matching vinyl jamb extension and vinyl casing. Vinyl jamb extension and casing does not need to be painted, does not fade and perfectly matches your window. Casing corners are available in 45° and in Rosette styles.



WOOD PACKAGE

Wood package is a timeless option providing a rich and sophisticated look that completes the windows.

The options include:

Primed Pine Primed in White

Clear Maple

Red Oak

White Oak

Colonial Casing



Step Bevel Casing



Back Band Casing



Flat Casing



LOWE GLASS TYPES



GUARDIAN CLIMAGUARD

Cold outside, warm inside. ClimaGuard 80/71 coated residential glass is designed to maximize solar heat gain and retain indoor heat. This type of glass is referred to as solar gain glass. Guardian ClimaGuard 80/71 is our default glass for the most energy efficient applications.



CARDINAL LOE-180

LoE-180 by Cardinal Glass is another typer of solar gain glass with similar performance characteristic to Guardian ClimaGuard 80/71.

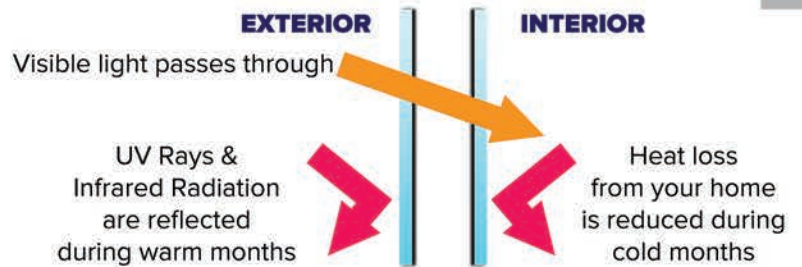


CARDINAL LOE-272

LoE-272 by Cardinal Glass has more tint and blocks out more UV rays compared to LoE-180 while having a slightly inferior performance during colder months.

This glass is recommended for windows with lots of sun exposure.

LOW-E GLASS EXPLAINED



PRIVACY GLASS TYPES



pinhead



rainglass



sandblasted



deltafrost

GRILLS



5/8" Flat custom paint available



1" Flat custom paint available

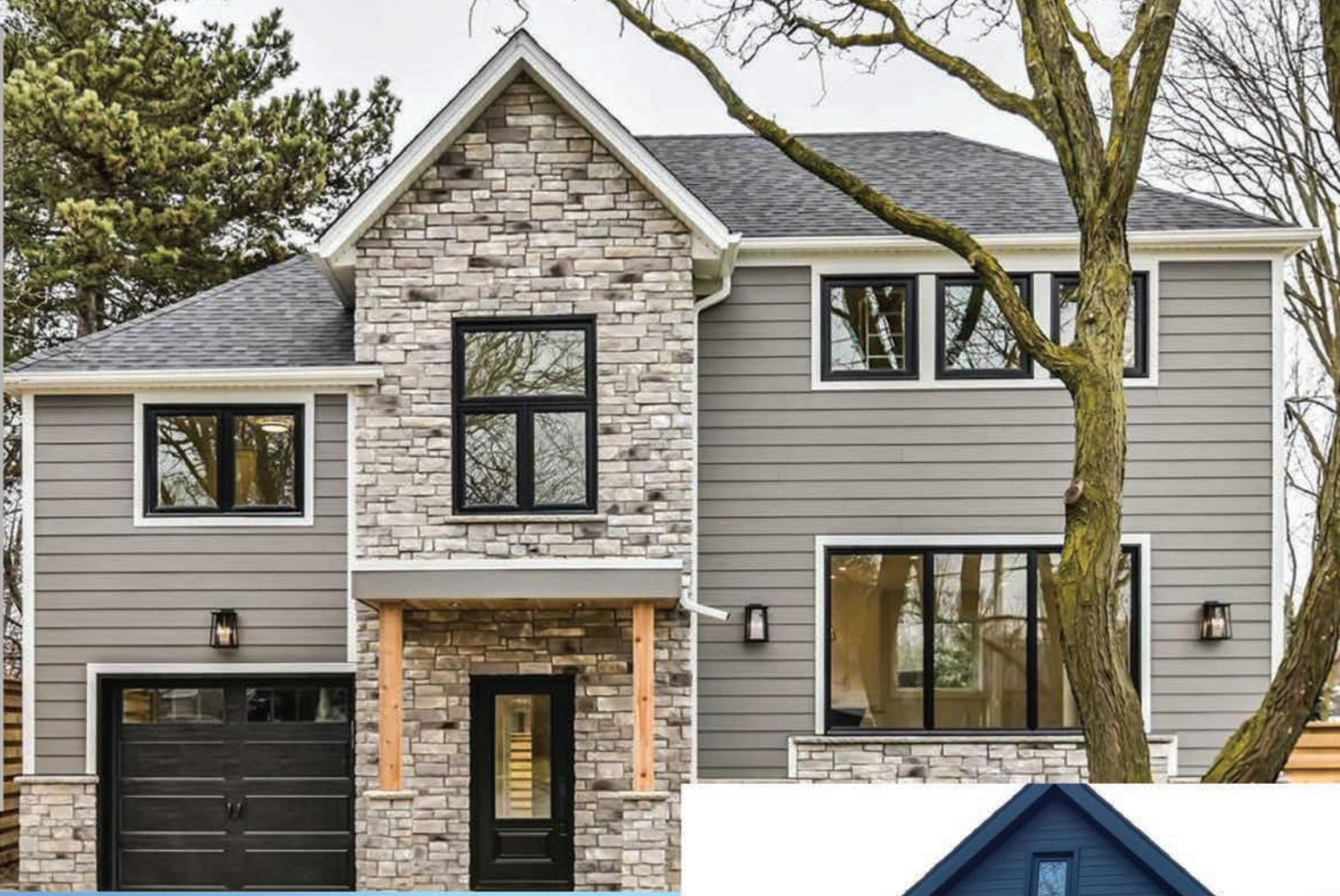


Georgian paint not available



1/4" Pewter also available in white & brass

GALLERY



COLOUR OPTIONS

The standard colour of our vinyl windows is bright white. The windows can also be painted to any colour based on Gentek or Kaycan colour chart. Most windows can be painted on the outside and inside, with the exception of slider and hung windows.

SOME OF OUR MOST POPULAR COLOURS



black



commercial brown



chestnut brown



slate



sable



sandalwood



maize - ivory



forest green



canyon clay



iron ore



pebble



almond



ENERTEC

WINDOW SYSTEMS INC.

enertecwindows.ca

T. 647-946-2877

F. 647-792-6915

E. info@enertecwindows.ca

www.enertecwindows.ca

99 Rodinea Road, Units 1-3

Vaughan, ON L6A 1R3